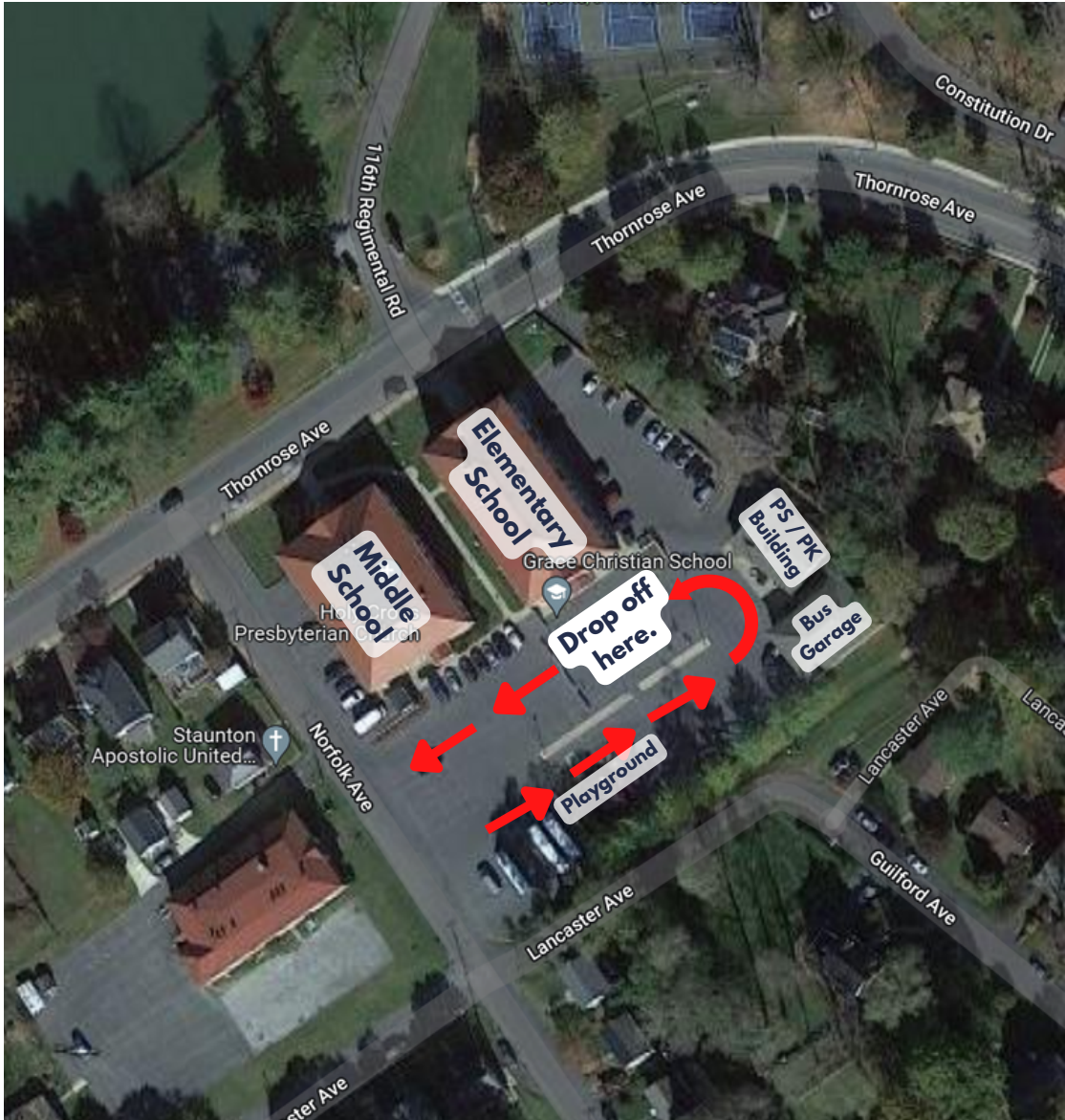




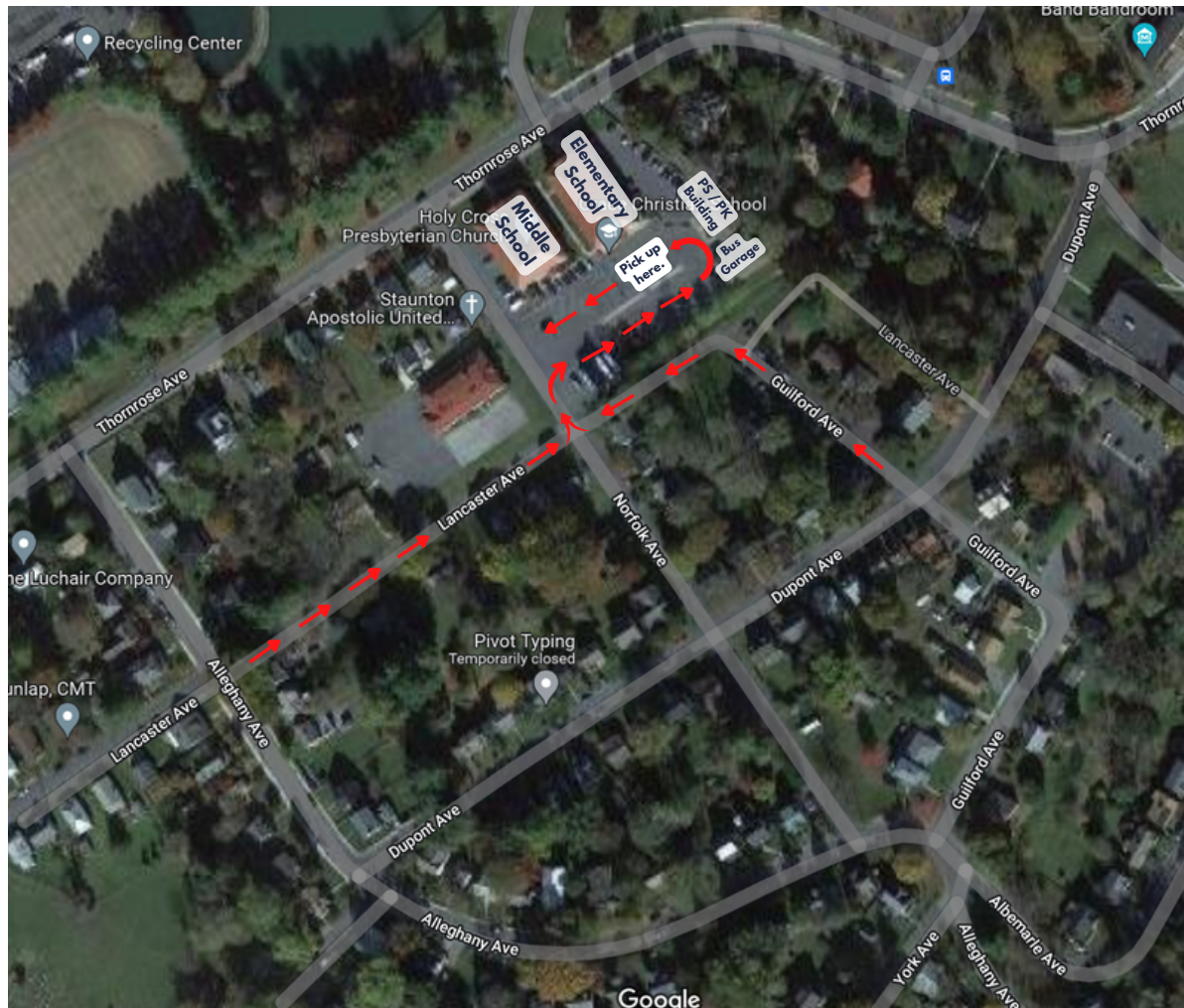
ES/MS MORNING ARRIVAL



1. Pull up as far as possible to the two cement barriers when you drop off your children.
2. Students should exit your vehicle on the passenger side.
3. **Students arriving before 7:45 am:** should be dropped off at the Preschool/Pre-K building for Before School Care.
4. **Students arriving after 7:45 am:** should report directly to their classroom upon arrival.
5. **Parents of Preschool/Pre-K**
Students can parallel park in front of the PK building (green shaded area) or park in any available space outside the barriers and walk students into the Preschool/Pre-K building.
6. For Preschool and Pre-K students using Before School Care, follow directions in #3.



ES/MS AFTERNOON DISMISSAL



1. Line up via Lancaster Ave or Guilford Ave. Once dismissal begins, vehicles will take turns entering the school parking lot from the two groups. Please do not block driveways as you approach the school from either direction.
2. Please pass by Lancaster Ave once it is full, continue on Alleghany Ave, and turn left onto Guilford Ave. Follow Guilford Ave. all the way down the hill back towards the school.
3. Display your dismissal number on your passenger side visor and flip it down so it is visible.
4. Pull up as far as possible to the two cement barriers when you pick up your children.
5. Preschool Pick Up at 11:30 and Pre-K Pick Up at 11:50. Parents can park in any available space outside of the barriers and walk to the PK building to pick up their child.