



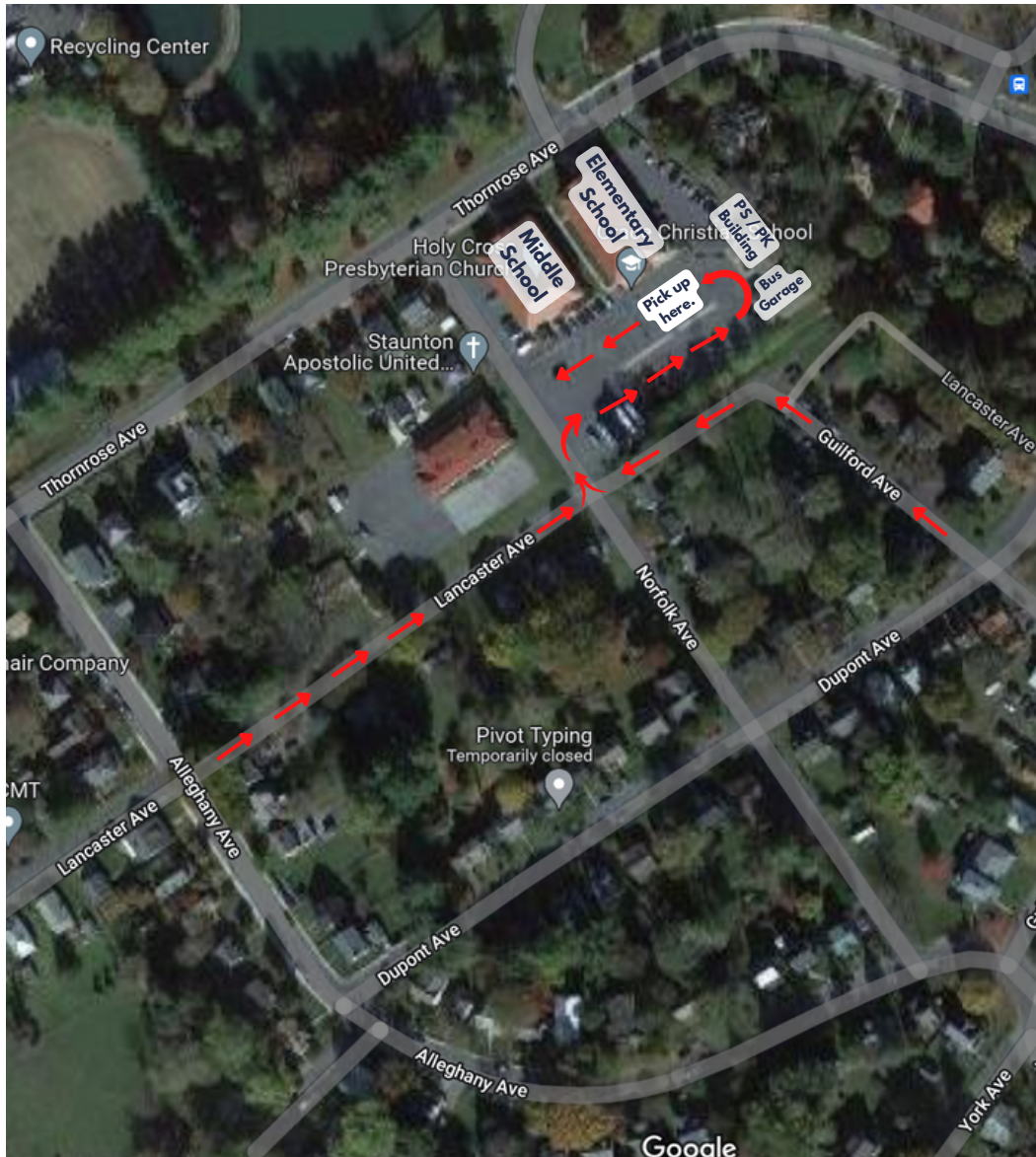
ES/MS MORNING ARRIVAL



1. Pull up as far as possible to the two cement barriers when you drop off your children.
2. Students should exit your vehicle on the passenger side.
3. All ES/MS students should be dropped off at the elementary arrival entrance. Students arriving before 7:45 will go to the Before School Care room (Student FACTS account will be billed).
4. Parents of Preschool/Pre-K Students can parallel park in front of the PK building (green shaded area) or park in any available space outside the barriers and walk students to the building. (Before 7:55 am, take students to the elementary building arrival entrance, after 7:55 am take students directly to the PS/PK Building.)



ES/MS AFTERNOON DISMISSAL



1. Line up via Lancaster Ave or Guilford Ave. Once dismissal begins, vehicles will take turns entering the school parking lot from the two groups. Please do not block driveways as you approach the school from either direction.
2. Please pass by Lancaster Ave once it is full, continue on Alleghany Ave, and turn left onto Guilford Ave. Follow Guilford Ave. all the way down the hill back towards the school.
3. Display your dismissal number on your passenger side visor and flip it down so it is visible.
4. Pull up as far as possible to the two cement barriers when you pick up your children.
5. Preschool and Pre-K Pick Up at 11:50. Parents can park in any available space outside of the barriers and walk to the PK building to pick up their child.